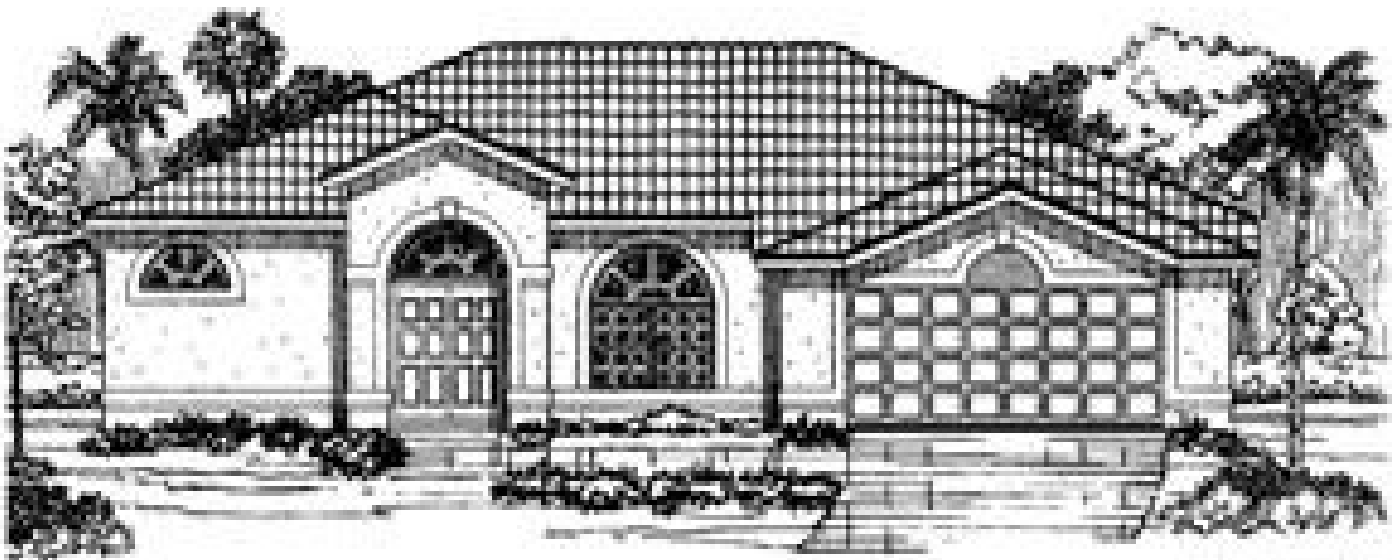


US·HOME®



ELEVATION 'A'



ELEVATION 'B'



ELEVATION 'C'

Artistic rendering only. Window sizes and locations, room sizes and dimensions are approximate and may vary. Prices and features subject to change without notice.

The Cayman V

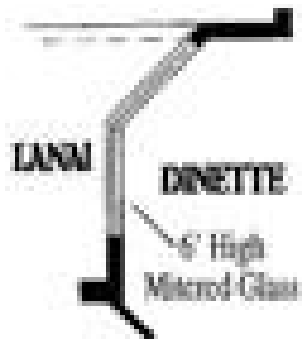
The Cayman V



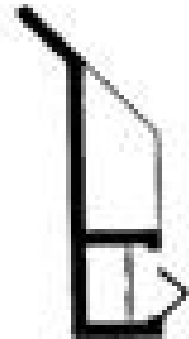
AREA TOTALS	
WIDTH	50' 0"
DEPTH	68' 0"
LIVING AREA	2786
ENTRY	58
GARAGE	437
LANAI	172
TOTAL	3533

© U.S. HOME CORPORATION

Options, incentives and other considerations are subject to certain terms, conditions and restrictions which may include using design.



#1 MIRRORRED GLASS AT DINETTE



#2 KITCHEN DESK



#3 DEN IN LIEU OF BEDROOM 3



#4 FIXED GLASS IN MASTER SUITE

Options shown are not included in the base price of the home.
For pricing information, please consult with your salesperson.

More Options



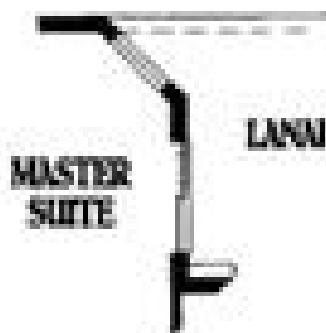
#5 BAY WINDOW AT FAMILY ROOM



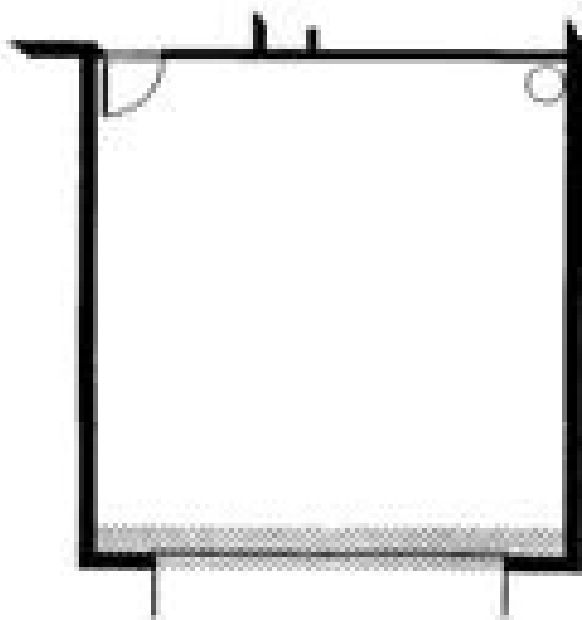
#6 BUILT-IN AT FAMILY ROOM



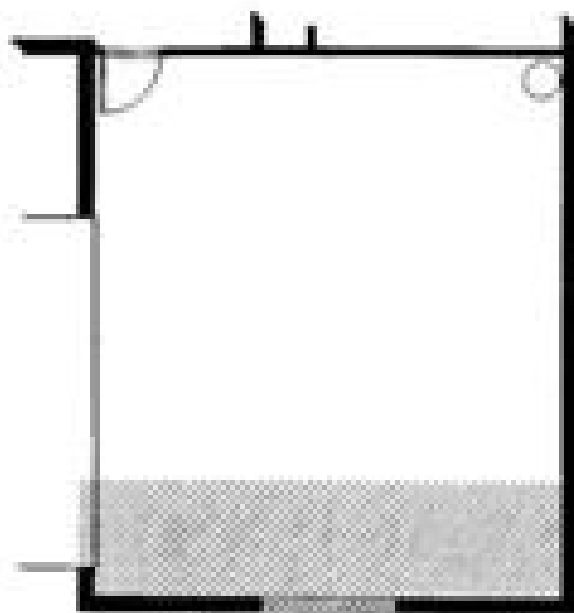
#7 BAY WINDOW AT MASTER SUITE



#8 WINDOW IN MASTER SUITE



#9 2' EXTENDED GARAGE



#10 COURTYARD GARAGE

U.S. HOME



US·HOME®

*Nation's Only 3-Time Winner
National Builder of the Year*

Revised 2/1/2000
See 7 Collier