

**I  
N  
V  
E  
R  
N  
E  
S  
S  
V**



*ELEVATION A*



*ELEVATION B*



*ELEVATION C*

**2 Bedroom, 2 Bath & Den**

**Rutenberg  
Homes**

A DIVISION OF US-HOME CORPORATION

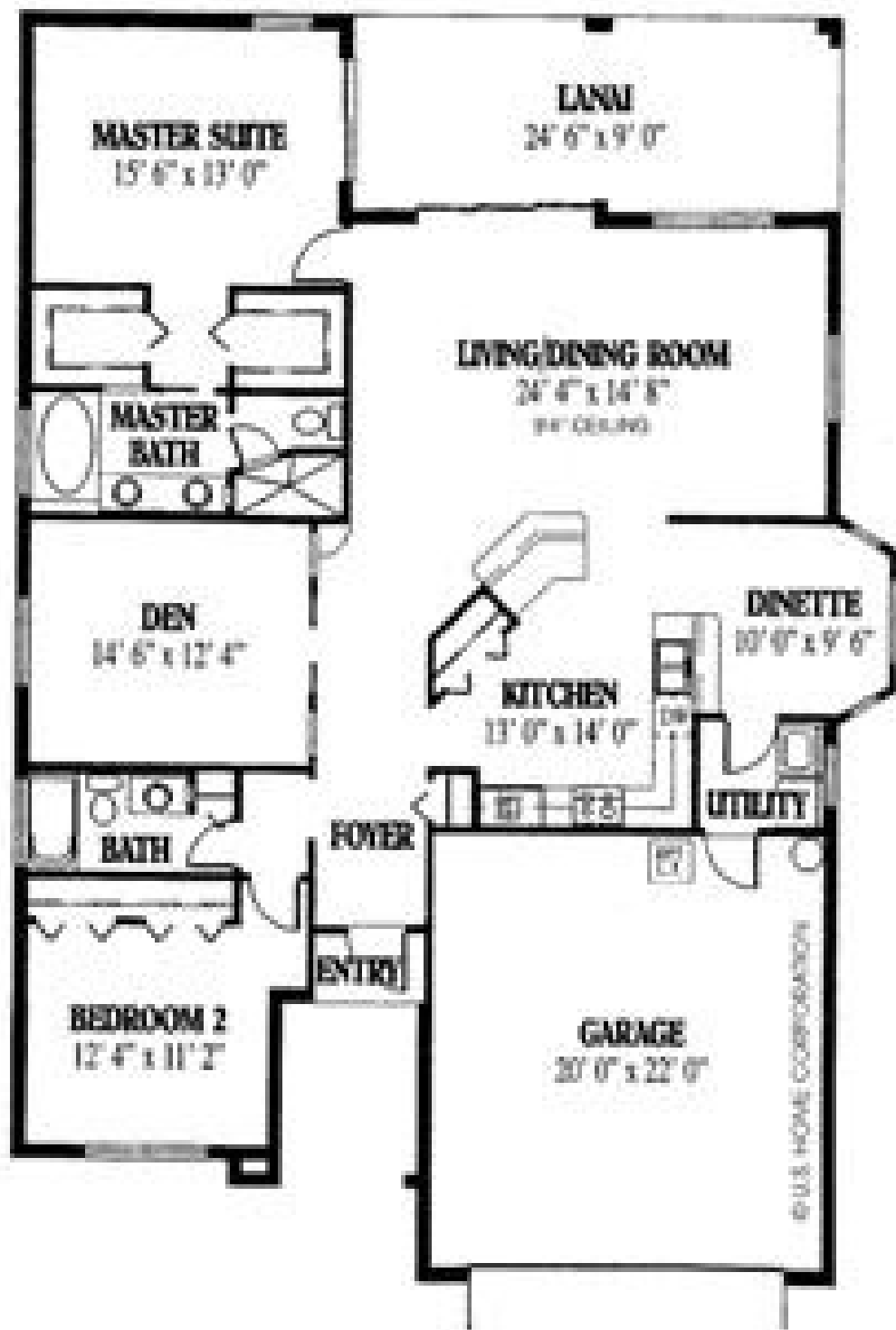
© 2005 US-HOME CORPORATION



# I N V E R N E S S V

AREA TOTALS	
Width	45'
Depth	64'
Living Area	2819
Garage	478
Entry	96
Land	245
Total	2629

1/4" GRAPHIC

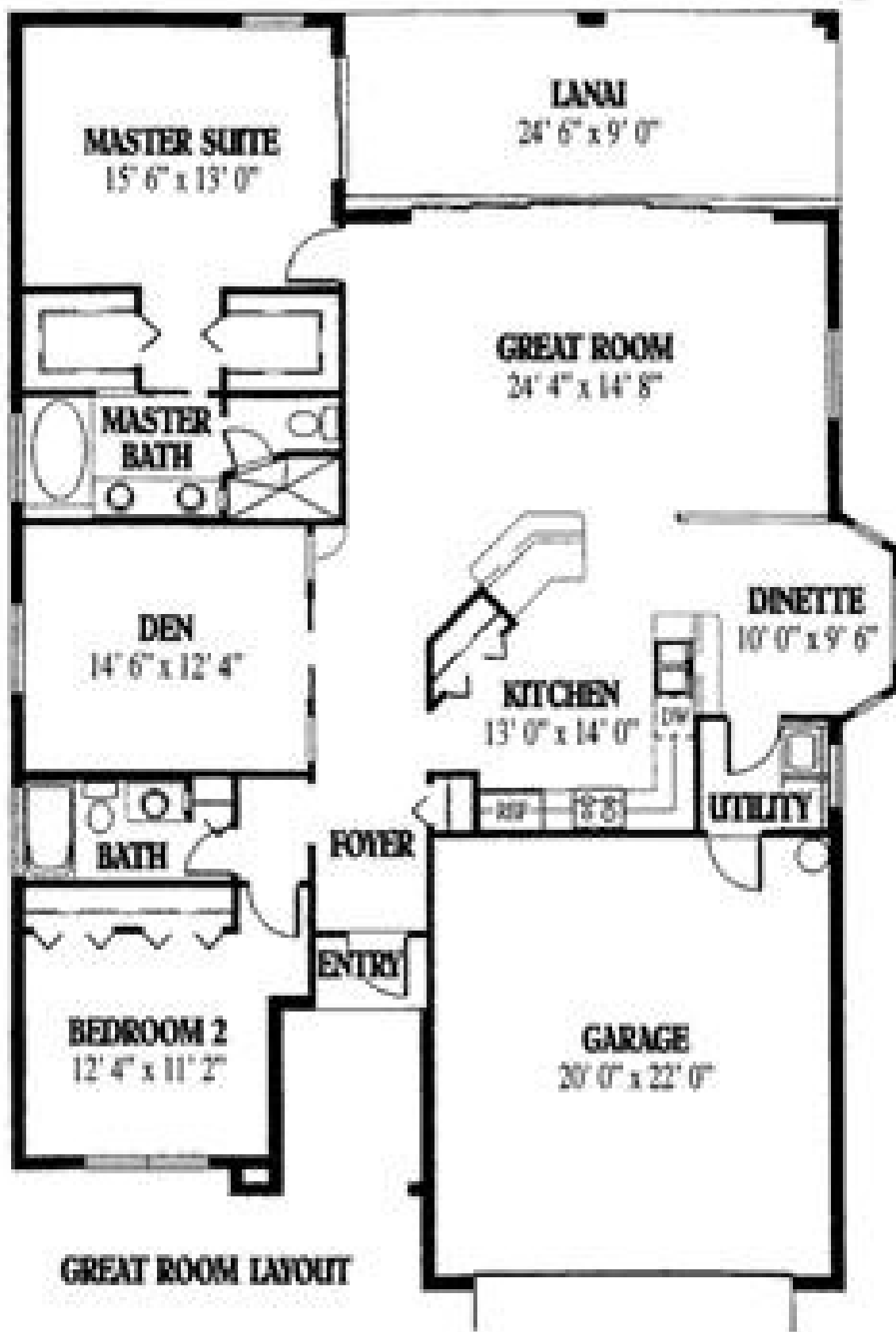


Expansive areas are what set the Inverness floor plan apart from the average 2 bedroom, 2 bath home... oversized rooms make this layout fabulous! The oversized entry takes you into the wide hallway leading to the combined living and dining room - over 550 square feet. A large kitchen gives the chef of the house lots of elbow space and a double sink on the extended counter overlooks the bay window daisies. Plus, options galore are available to enhance this already great home.



**Rutenberg Homes**  
A DIVISION OF U.S. HOME CORPORATION

SEE CONCEPTS ONLY. APPEARANCE AND SIZE MAY VARY FROM ACTUAL CONSTRUCTION.

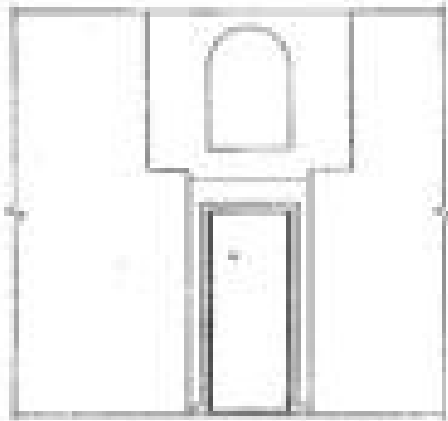


**GREAT ROOM LAYOUT**

This floor plan shows optional Great Room and 8' high by 18' wide sliding glass doors.

**P  
O  
P  
U  
L  
A  
R  
  
O  
P  
T  
I  
O  
N  
S**

**POPULAR  
OPTIONS**



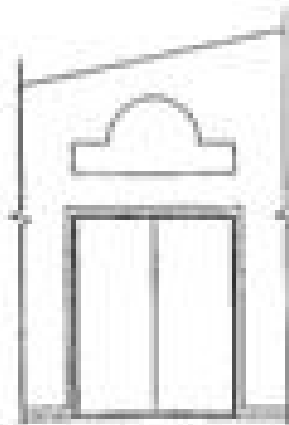
**CUT-OUTS OVER MASTER BATH DOOR  
AVAILABLE WITH OPTIONAL VAULTED CEILING**



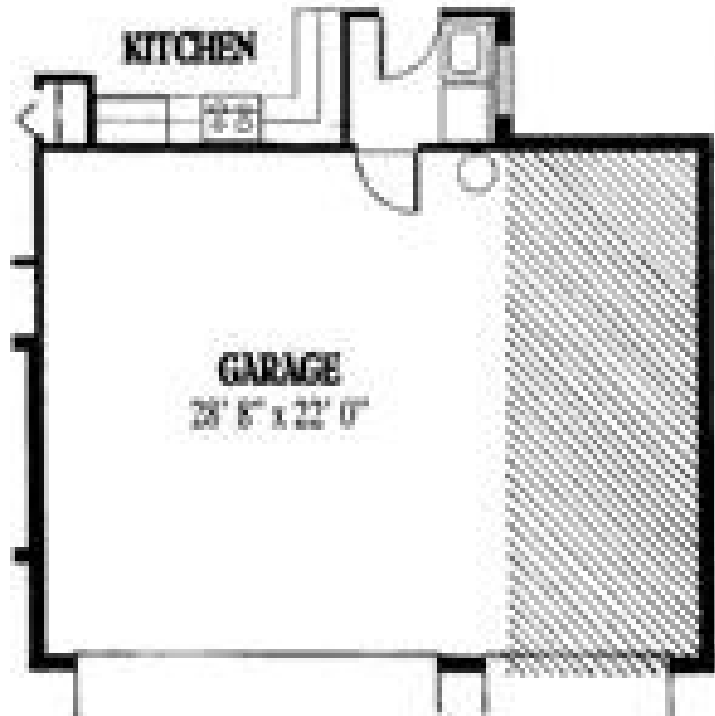
**POOL BATH AT SIDE OF HOUSE**  
Additional Living Area 52' sq. ft.



**BAY WINDOW AT MASTER SUITE**  
Additional Living Area 18' sq. ft.



**CUT-OUTS OVER DEN DOOR AVAILABLE  
WITH OPTIONAL VAULTED CEILING**



**1-CAR GARAGE**  
Additional Garage Area 212' sq. ft.

